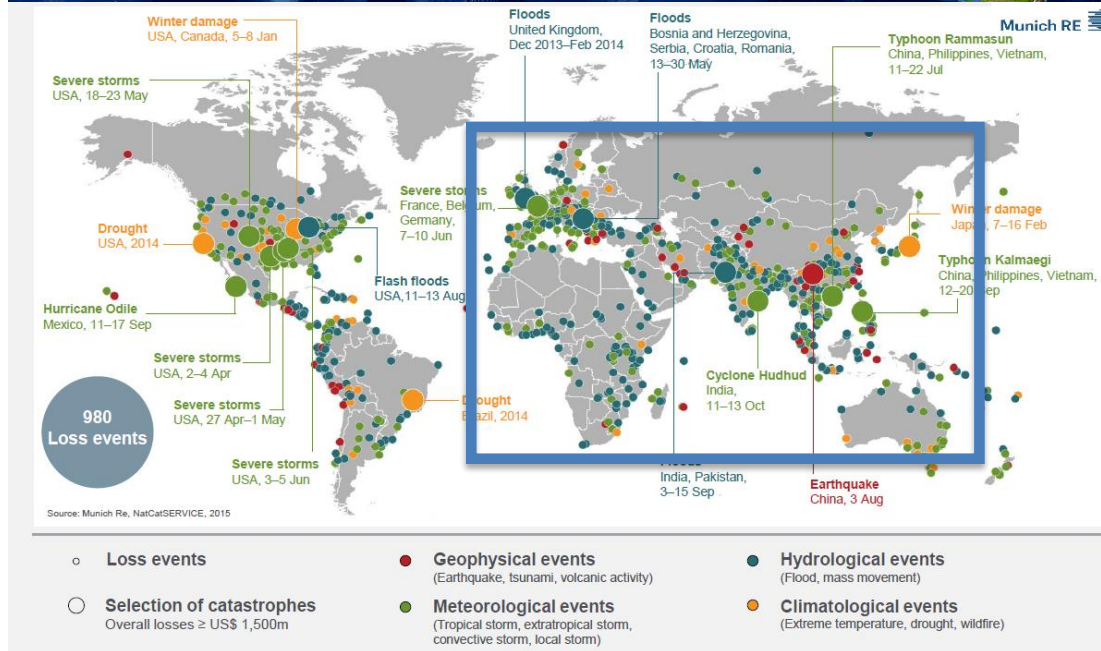
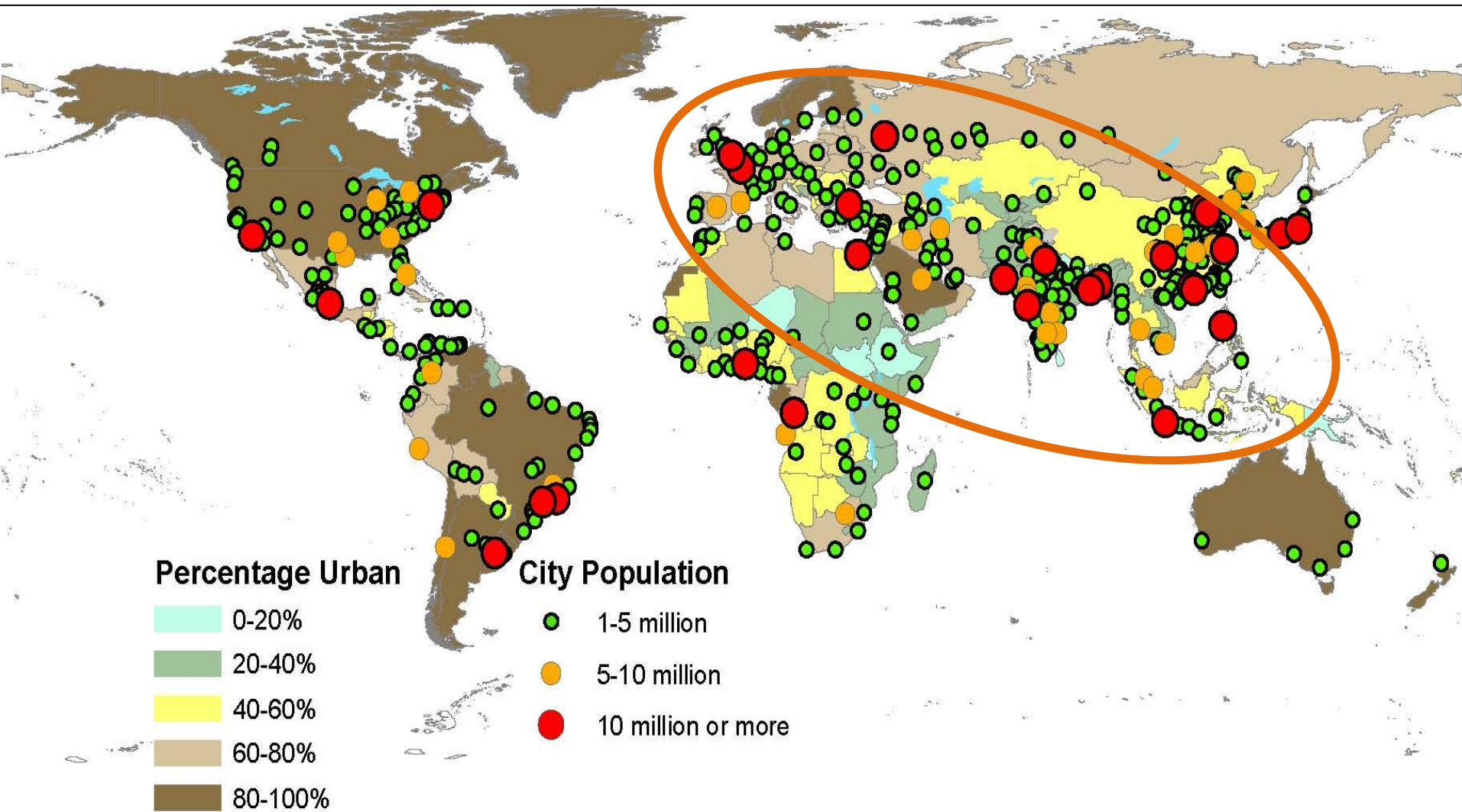


**Assessment of Natural Disaster Risk  
on the Belt and Road**



The Belt and Road region houses a majority of the world's population, and experiences most of the world's hazard events, disaster deaths and losses



Note: Designations employed and the presentation of material on this map do not imply the expression of any opinion whatsoever on the part of the Secretariat of the United Nations concerning the legal status of any country, territory or area, or of its authorities, or concerning the delimitation of its frontiers or boundaries.

With rapid urbanization, the figures will only get more critical in the future

# Common Themes

- Progress:
  - Application of Remote Sensing and ICT, Multi-sectoral, Multi-stakeholder, Mainstreaming
- Challenges:
  - Climate Variability, Urbanization, Trans-boundary Disasters, Regional concerns, Post mainstreaming inter-linkages
- Commitments:
  - Mainstreaming DRR and CCA, Legislation, Localization of Plans, Monitoring, Regional Network, Data Collaboration
- Agencies:
  - Government research institutions, Universities

# Unique Themes

- Progress:
  - GLOF, Urban Heat Islands.
- Challenges:
  - Fragmented, Lack of Roadmap. Decentralized DRR, Local Specificity. Financing and Technology Transfer. Research on better capacity building. Research application in industry. Science-Policy(-Practice), Dissemination and Communication.
- Commitments:
  - Science and Community Practice, Heritage, Regional Disaster Coverage, Integrated Approach (Digital – and conventional technology). Code Compliance.
- Agencies:
  - Private research centers, Citizen science.

# Risk Assessment issues

- Tools and methods
  - Physical, socio-economic, integrated
  - Single to multi-hazard, complex, cascading
- Governance
  - Trans-boundary risk assessment: DATA
  - Local risk assessment: Data + Capacity
  - Participatory risk assessment: awareness and local information
- Dynamism
  - Emerging and new risk

# Two specific points

- Please use your 4 minutes 30 seconds for the presentation / interventions you have prepared
- Last 30 seconds:
  - Pick up one specific and unique challenge in risk assessment
  - How to address that challenge collectively